

Contents

Determine the database type.....	1
Backup and RESTORE The Diver-Office SQL CE Database.....	1
Backup and Restore the Diver-Office SQL Express database	2
SQL Server Management Studio Express.....	2
Delete the current Database.....	2
Copy and Attach the Database Backup	3

Determine the database type

Depending on the version and upgrade route of Diver-Office might use either of the following two databases:

- SQL Compact Edition (CE), or
- SQL Express

To determine which version of the database is used follow:

1. Open the services on your computer. You can access the services from your Window's task bar, select **Start > Run**. In the Run dialog, type **Services.msc**, and then click the **[OK]** button.
2. In the list lookup the **SQL Server (DIVEROFFICE)**
3. If the **SQL Server (DIVEROFFICE)** item exists and is started then the SQL Express database is used. Continue to the section *"Backup The Diver-Office SQL Express Database"*
4. If the **SQL Server (DIVEROFFICE)** item cannot be found then the SQL CE database is being used. Continue to the section *"Backup The Diver-Office SQL CE Database"*

Backup and Restore SQL CE Database

The SQL CE database is a single file named **WHI.sdf** that is located in the folder:

Window 7/Vista: C:\ProgramData\Application Data\DiverOffice

Windows XP: C:\Documents and Settings\All Users\Application Data\DiverOffice

Please note that the folder **Application Data** is a hidden folder.

Make a copy of the **WHI.sdf** file to backup the database.

Copy the **WHI.sdf** file to the folder corresponding to your operating system to restore the database.

Backup and Restore the SQL Express database

1. In Windows Explorer, navigate to the database directory: **C:\Program Files\DiverOffice\DB**.
2. Locate the **DIVEROFFICE.mdf** file and **DIVEROFFICE.ldf** file. Highlight both files, right-click and select **Copy**.
3. In a safe and secure location, *e.g.*, on another location on your computer or on an external hard drive, right-click and select **Paste**.

The next step would be to put the database back on another computer. To do so, follow the next steps.

SQL Server Management Studio Express

You will need **SQL Server Management Studio Express** software. This software is free of charge and can be downloaded from the following website:

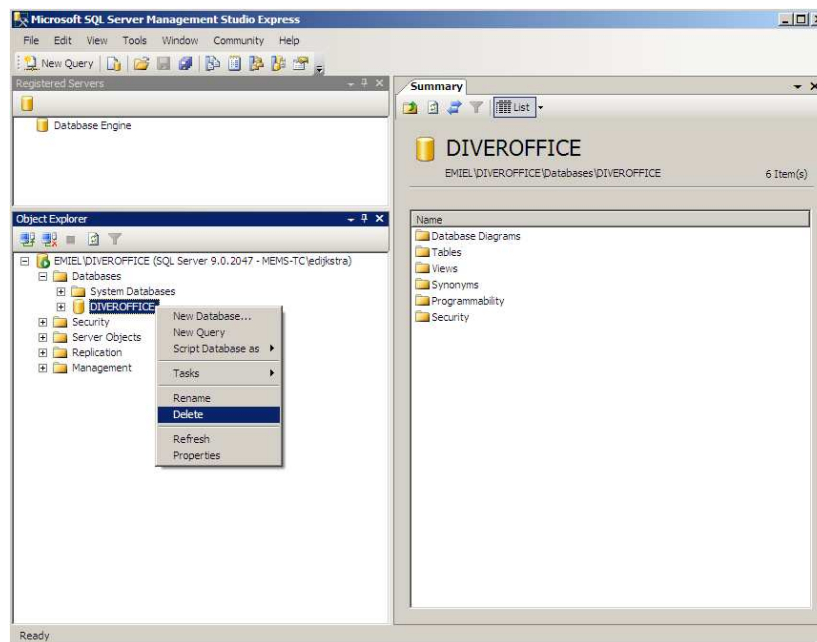
<http://www.microsoft.com/downloads/details.aspx?FamilyId=C243A5AE-4BD1-4E3D-94B8-5A0F62BF7796&displaylang=en>

Once downloaded, install the software on the same computer where Diver-Office is installed.

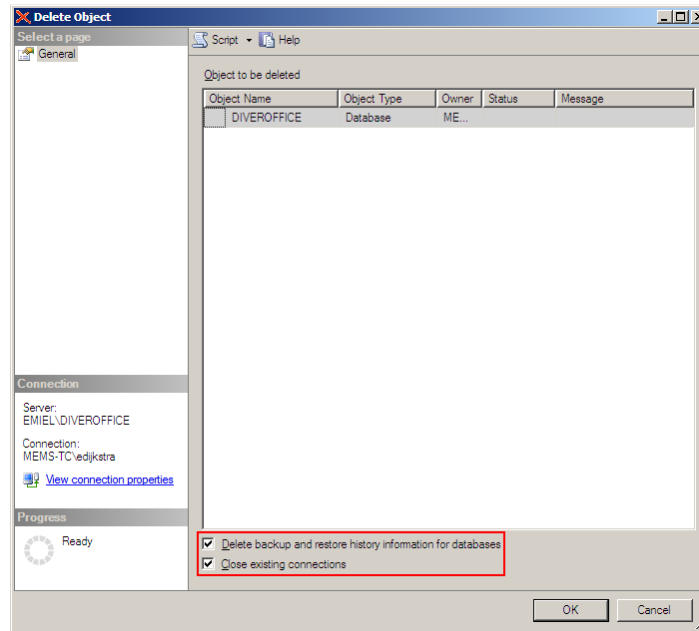
Delete the current Database

To delete a database, exit Diver-Office then start **SQL Server Management Studio Express** and connect to the Diver-Office database (described in the previous section).

In the **Object Explorer**, expand the **Databases** folder and select **DIVEROFFICE**. Right click and select **Delete** from the pop-up menu.



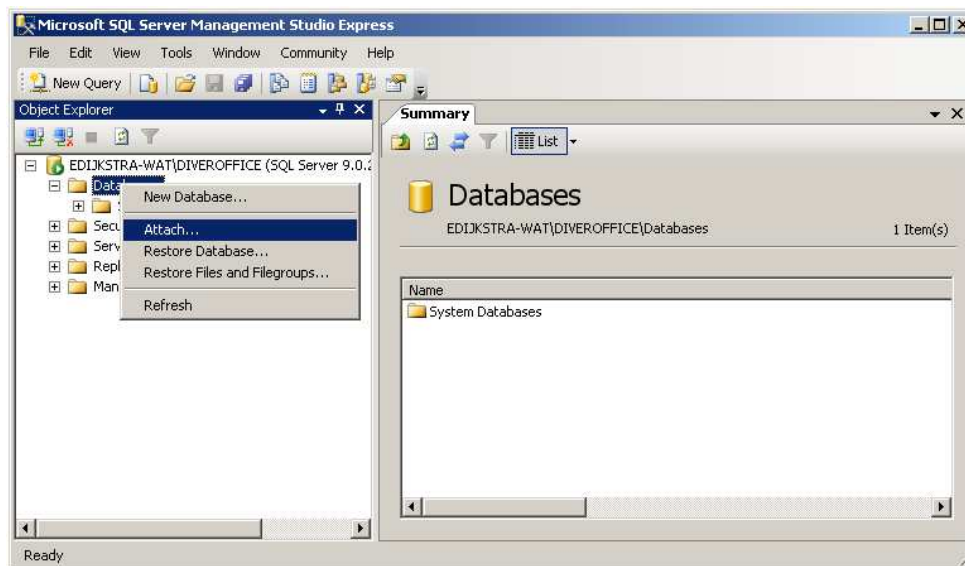
The following window will appear on your screen:



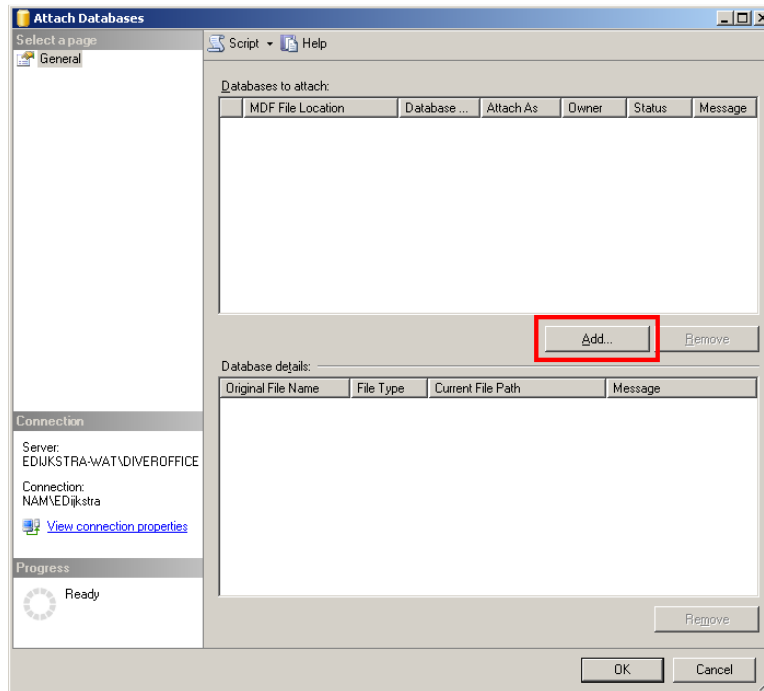
At the bottom of the Window, select both options and then click **[OK]**. Now the database files from **C:\Program Files\Diver-Office\DB** should have been deleted. Run Diver-Office. It will automatically create a new database upon launching.

Copy and Attach the Database Backup

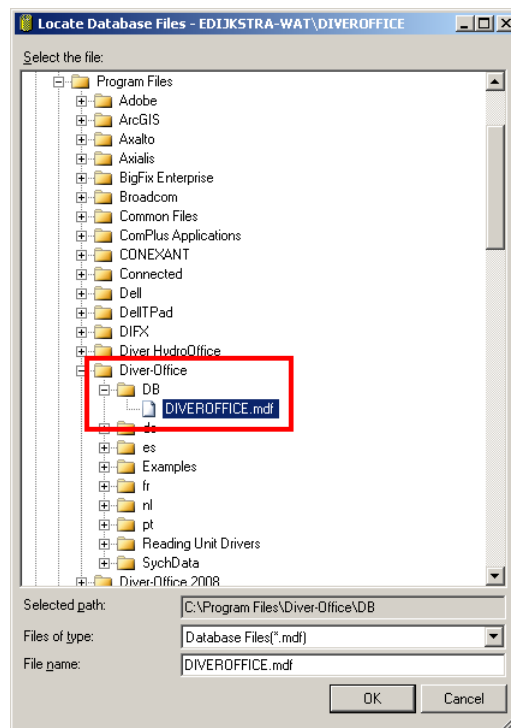
Copy the **DIVEROFFICE.mdf** file and **DIVEROFFICE.ldf** file to the database directory: **C:\Program Files\DiverOffice\DB**. Go to **SQL Server Management Studio Express** and right-click on databases. Select **New Database...**



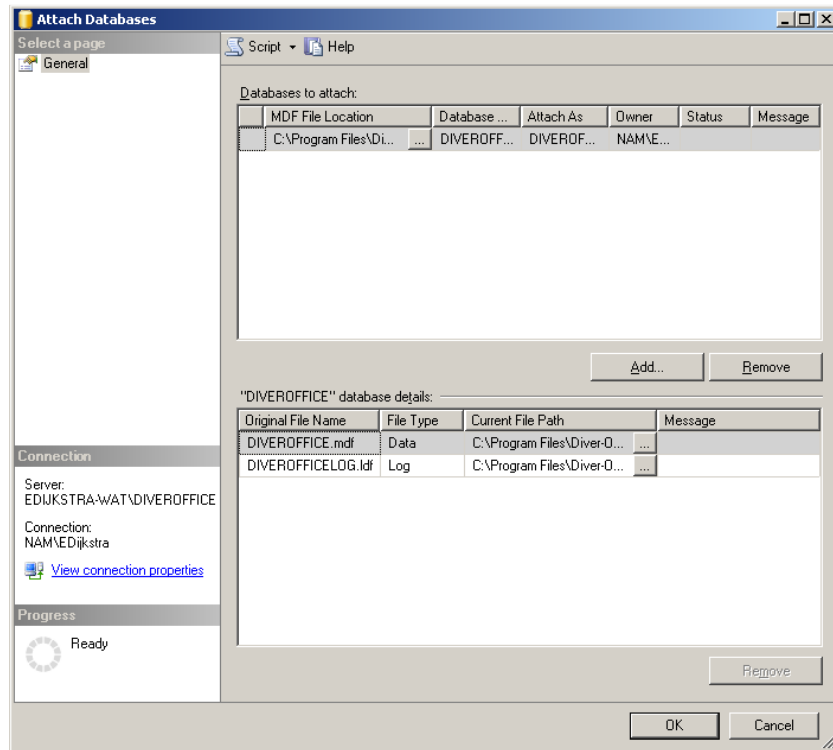
Click the **Add...** button in the **Attach Databases** window:



Browse to the DB folder in the Diver-Office folder and select the **DIVEROFFICE.mdf** file.



Click **OK** and click **OK** again **Attach Databases** window that now should look similar to:



Close **SQL Server Management Studio Express** and start Diver-Office. The copied database should now be opened.